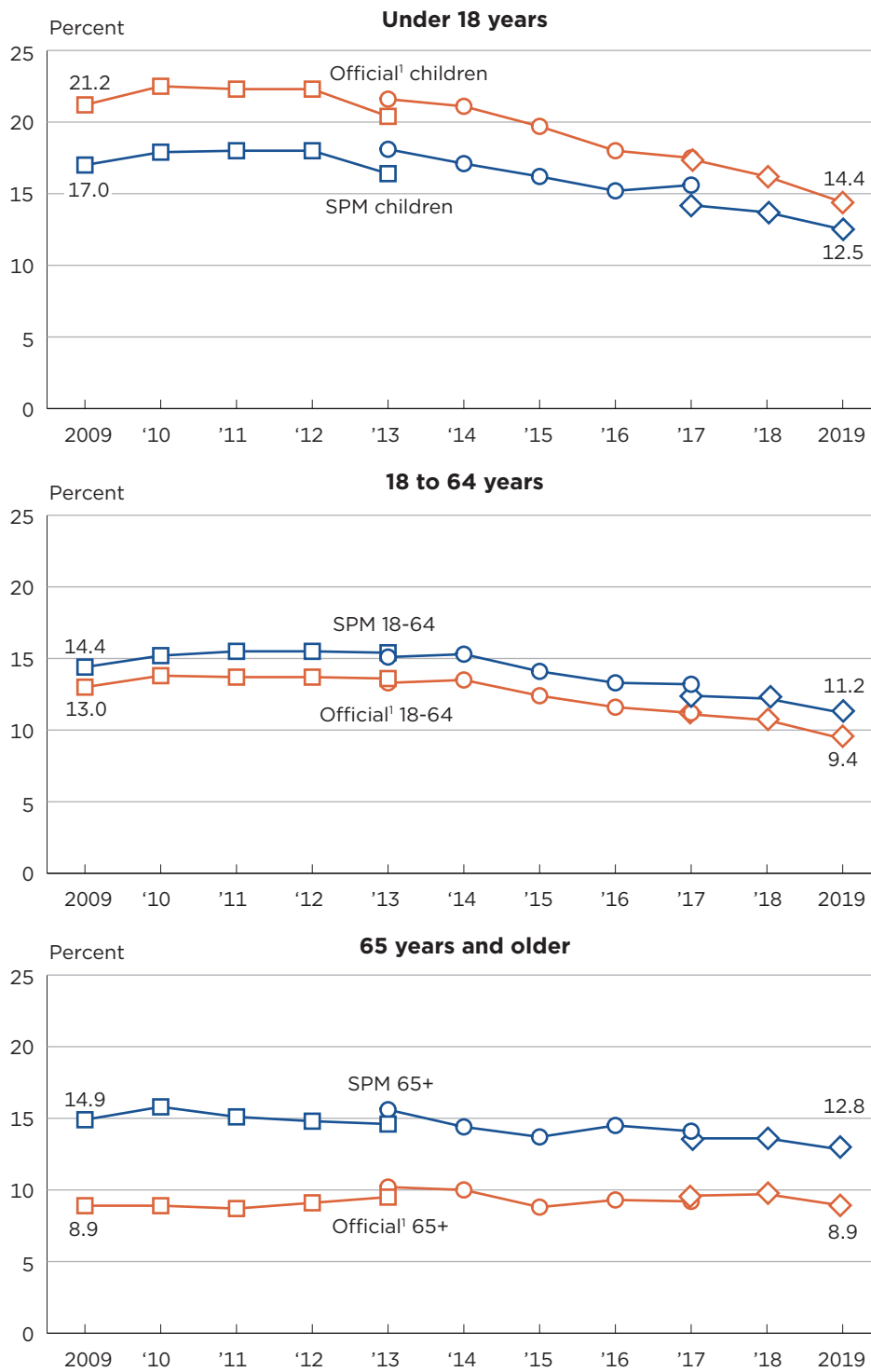


Figure 5.  
**Poverty Rates Using the Official and Supplemental Poverty Measures by Age Group: 2009 to 2019**

□ Traditional income questions    ○ Redesigned income questions    ◇ Updated processing system



<sup>1</sup> Includes unrelated individuals under the age of 15.  
 Note: The data for 2017 and beyond reflect the implementation of an updated processing system. The data for 2013 and beyond reflect the implementation of the redesigned income questions. For information on confidentiality protection, sampling error, nonsampling error, and definitions, see <<https://www2.census.gov/programs-surveys/cps/techdocs/cpsmar20.pdf>>.  
 Source: U.S. Census Bureau, Current Population Survey, 2010 to 2020 Annual Social and Economic Supplements (CPS ASEC).